



Submittal Data Sheet

AY-XPC18CU-B
18,000 BTU Wall Mount Indoor Unit

Job Name:	
Reference:	Date:



Sharp Air app available in Apple® App Store and Google® Play Store.

Product Features

A2L refrigerant R32
50ft long "Coanda Airflow"
"Multi Space" air circulation
Built-in Wi-Fi Adapter

CAPACITIES			
Cooling	Rated Capacity	BTU/H	18,000
Heating	Rated Capacity	BTU/H	21,600

NOTE: Test conditions are based on AHRI 210/240.

Cooling at 95°F Indoor: 80°F (26.7°C) DB / 67°F (19.4°C) WB
Heating at 47°F Indoor: 70°F (21.1°C) DB / 60°F (15.6°C) WB

REFRIGERANT	
Type	R32

ELECTRICAL		
Voltage, Phase, Frequency		208/230, 1, 60
Guaranteed Voltage Range	V AC	187 - 253
Voltage: Indoor - Outdoor, S1-S2	V AC	208/230
Voltage: Indoor - Outdoor, S2-S3	V DC	24
Short-circuit Current Rating (SCCR)	kA	5.0
MCA	A	0.4

PIPING		
Gas Pipe Size O.D. (Flared)	In. (mm)	3/8 (9.52)
Liquid Pipe Size O.D. (Flared)	In. (mm)	1/4 (6.35)

FAN and SOUND		
Fan		Cross Flow Fan
Fan Motor Full Load Amperage	A	0.4
Fan Motor Output	W	30
Airflow Rate at Cooling, Dry	CFM	636 / 597 / 480 / 328 / 251
Airflow Rate at Cooling, Wet	CFM	553 / 519 / 417 / 285 / 218
Airflow Rate at Heating, Dry	CFM	752 / 713 / 558 / 403 / 290
Sound Pressure Level (Cooling)	dB(A)	45 / 43 / 38 / 31 / 28
Sound Pressure Level (Heating)	dB(A)	49 / 47 / 41 / 31 / 25

DIMENSION and WEIGHT		Unit	Package
Dimensions	W x H x D: In. (mm)	41.4 x 12.4 x 9.8 (1052 x 316 x 249)	43.8 x 12.7 x 15.3 (1113 x 323 x 389)
Weight	lbs. (kg)	31 (14)	35 (16)

OPERATING TEMPERATURE		Max.	Min.
Cooling	°F (°C)	90 (32.2)	70 (21.1)
Heating	°F (°C)	81 (27.2)	-

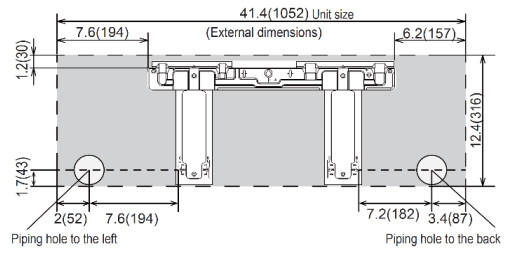
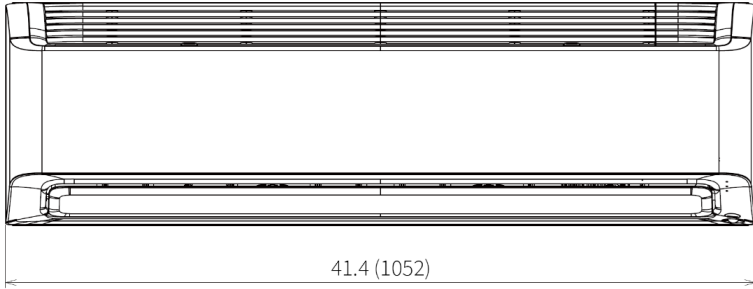
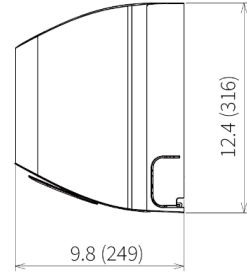
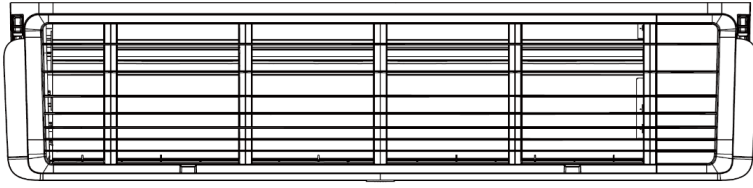
OTHERS		Indoor Unit
External Finish Color		Dark Gray

NOTE: Test conditions are based on AHRI 210/240.

DIMENSIONS: AY-XPC18CU-B

Indoor Unit

Length unit: inch (mm)



SHARP

Sharp Corporation, Japan
2-1-25, Kyutaromachi, Chuo-ku, Osaka

